

# Commercial Hopper Tanks

M5 - M11 (16' 5" - 36' 1")



*Engineered to a Higher Standard*

# Engineered to a



Behlen has long enjoyed a reputation for building strong, durable equipment. Behlen Hopper Tanks follow that tradition. We invite you to compare, point by point, the features and benefits of our tanks. We believe you will recognize that Behlen Hopper Tanks provide exceptional value.



# Higher Standard

Behlen Hopper Tanks are designed using state-of-the-art Computer Assisted Design (CAD) techniques to ensure ease of assembly and trouble-free operation. All components are designed to exacting standards with strength and ease of erection in mind. These tanks are built to last even in demanding, high throughput operations.





## STRUCTURAL SUPPORT SYSTEM

Structural I-beams provide the backbone for the support system with ample length to allow plenty of room for unloading equipment.

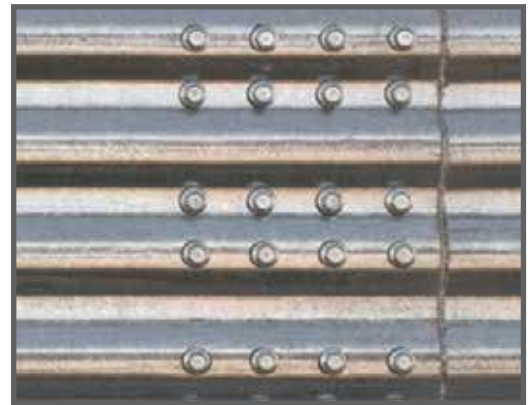
Stiffeners fasten to ridge compression members directly above the sturdy I-beam legs. These legs are secured by a heavy X-bracing system. This configuration is one of the strongest available.



### UNIQUELY DESIGNED WALL SYSTEM

The sidewall contains four rows of high-strength 3/8" (grade 8.2) bolts per vertical seam which means extra strength and rigidity.

Unique trapezoidal wall panels have been computerized to provide outstanding strength. Their unique design permits bolting of flat surface to flat surface for a tighter, more waterproof connection.



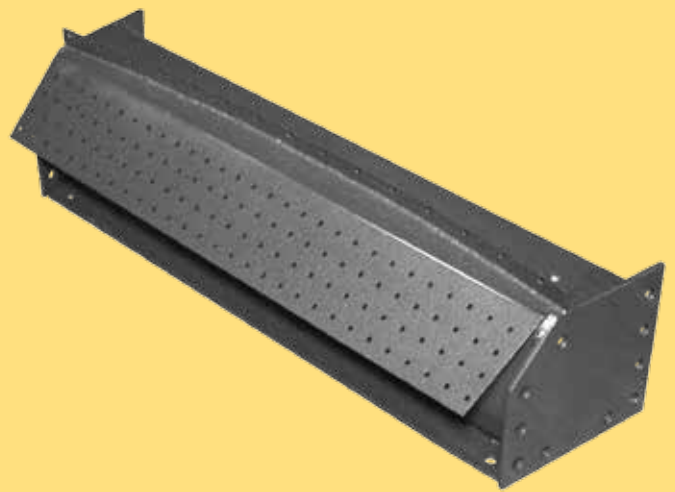
### STIFFENERS OFFER EXCEPTIONAL LOAD CARRYING CAPABILITIES

Superior design of bearing plate between stiffeners assures a continuous vertical load transfer with a simple bolted connection. Strong galvanized, hat-shaped wall stiffeners provide excellent resistance to vertical grain loads and wind.





Compression beams are one of the most critical areas of any hopper tank. Behlen Commercial Hoppers are equipped with massive, precision welded beams to provide a secure connection between the wall sheets, structural legs, and hopper panels. These compression members have been designed to rigorous standards to ensure a lifetime of trouble-free operation.

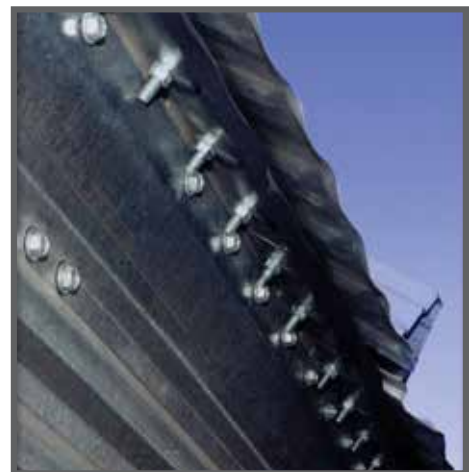


## UNMATCHED ROOF SYSTEM

Behlen roofs are manufacturer certified to withstand 40 lbs/sq. ft. ground snow load. Gentle 30° roof pitch allows for optimum filling.

Roof panels are 3 1/2" high with four stair steps on both sides. This provides outstanding strength against snow, wind, and other loads. Roof panels are roll-formed for a precision fit.

Continuous angle connectors at the eave are superior to clip systems and provide the option of an open or closed eave.





## WALL DOOR

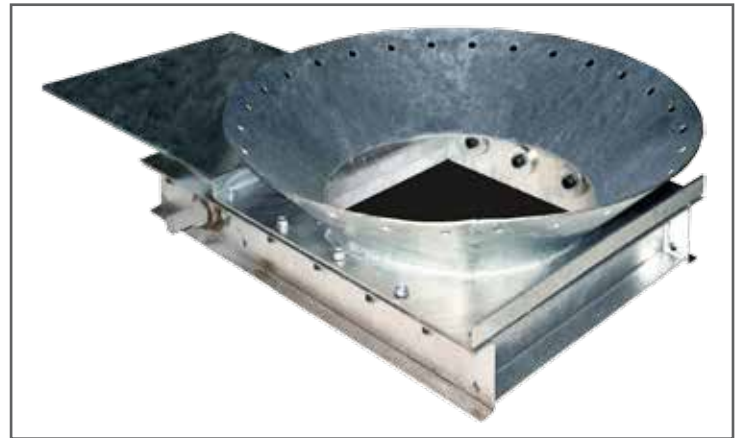
Wall door features heavy channel frame with easy latch opening, square (27" x 27") inside and outside hinged doors.

## ROLLER SLIDE GATE

Roller slide gate opens and closes smoothly. Unit fastens directly to hopper opening and allows easy access for unloading convenience. (Shown in optional galvanized finish and standard 16" opening.)

## INLET OPTIONS

Inlet options include a 32" sliding cap, a 12' flanged cap on a 32" plate, or a flat 32" plate for installation of various sizes and types of transitions and spouting.



Model	Eave Height (ft/in)	Overall Height (ft/in)	Eave Height (meters)	Overall Height (meters)	Bushels* (maximum)	Metric Tons* (maximum)			Cubic Meters
						Wheat	Corn	Rice	
<b>5 Meter Commercial Hopper Tanks</b>									
<b>HOPPER TANKS - Diameter 5 meters (16' 5") 45 degree hopper angle</b>									
5x4	23' 4"	27' 11"	7.12	8.52	3,120	88	79	63	103
5x5	26' 7"	31' 3"	8.12	9.52	3,708	105	94	75	123
5x6	29' 11"	34' 6"	9.12	10.52	4,296	122	109	88	143
5x7	33' 2"	37' 10"	10.12	11.52	4,884	138	124	100	163
5x8	36' 5"	41' 1"	11.12	12.52	5,472	155	139	112	182
5x9	39' 9"	44' 4"	12.12	13.52	6,060	172	154	124	145
5x10	43' 0"	47' 8"	13.12	14.52	6,648	188	169	136	221
5x11	46' 3"	50' 11"	14.12	15.52	7,236	205	184	148	241
5x12	49' 7"	54' 3"	15.12	16.52	7,824	222	199	160	261
5x13	52' 10"	57' 6"	16.12	17.52	8,412	239	214	172	280
5x14	56' 1"	60' 9"	17.12	18.52	9,000	255	229	184	300
5x15	59' 5"	64' 0"	18.12	19.52	9,588	272	244	196	320
5x16	62' 8"	67' 4"	19.12	20.52	10,176	288	259	208	339
5x17	66' 0"	70' 7"	20.12	21.52	10,764	305	274	220	359

5 meter 45 degree hopper Clearance 34.5" (838 mm) from bottom of hopper (without gate) to base of Leg)  
Based on Standard 16" (406 mm) opening other opening sizes available on request

Model	Eave Height (ft/in)	Overall Height (ft/in)	Eave Height (meters)	Overall Height (meters)	Bushels* (maximum)	Metric Tons* (maximum)			Cubic Meters
						Wheat	Corn	Rice	
<b>5 Meter Commercial Hopper Tanks</b>									
<b>HOPPER TANKS - Diameter 5 meters (16' 5") 60 degree hopper angle</b>									
5x4	28' 3"	32' 10"	8.61	10.01	3,476	98	88	71	115
5x5	31' 6"	36' 2"	9.61	11.01	4,066	114	103	78	135
5x6	34' 10"	39' 5"	10.61	12.01	4,657	131	118	90	154
5x7	38' 1"	42' 8"	11.61	13.01	5,247	148	133	107	174
5x8	41' 5"	46' 0"	12.61	14.01	5,838	164	148	119	194
5x9	44' 8"	49' 3"	13.61	15.01	6,428	181	163	131	213
5x10	47' 11"	52' 6"	14.61	16.01	7,019	197	178	143	233
5x11	51' 3"	55' 10"	15.61	17.01	7,609	214	193	155	253
5x12	54' 6"	59' 1"	16.61	18.01	8,200	231	208	167	272
5x13	57' 9"	62' 4"	17.61	19.01	8,790	247	223	179	292
5x14	61' 1"	65' 8"	18.61	20.01	9,381	264	238	191	312
5x15	64' 4"	68' 11"	19.61	21.01	9,971	281	253	203	331
5x16	67' 7"	72' 3"	20.61	22.01	10,562	297	268	215	351
5x17	70' 10"	75' 6"	21.61	23.01	11,152	314	283	228	370

5 meter 60 degree hopper Clearance 33" (838 mm) from bottom of hopper (without gate) to base of Leg)  
Based on Standard 16" (406 mm) opening other opening sizes available on request

Behlen commercial hopper tanks are externally stiffened with two stiffener columns per sidewall sheet to the eave and have a one ring access door located in the second ring from the base of the tank.  
Behlen hopper tanks are designed for the storage of grain and similar free-flowing materials weighting up to 50 lbs./ft.<sup>3</sup> (800kg/m<sup>3</sup>). All capacities are based on 28' angle of repose. Bushel and metric tonnage capacity includes 6% compaction.

- Typical Grain Densities:**
- Wheat approximately 50 lbs./ft.<sup>3</sup> (800kg/m<sup>3</sup>)
  - Corn approximately 45 lbs./ft.<sup>3</sup> (720kg/m<sup>3</sup>)
  - Rice approximately 36 lbs./ft.<sup>3</sup> (580kg/m<sup>3</sup>)



Model	Eave Height (ft/in)	Overall Height (ft/in)	Eave Height (meters)	Overall Height (meters)	Bushels* (maximum)	Metric Tons* (maximum)			Cubic Meters
						Wheat	Corn	Rice	
<b>7 Meter Commercial Hopper Tanks</b> HOPPER TANKS - Diameter 7 meters (22' 11") 45 degree hopper									
7x4	26' 8"	33' 2"	8.12	10.09	6,704	190	171	137	223
7x5	29' 11"	36' 5"	9.12	11.09	7,856	223	201	160	261
7x6	33' 3"	39' 9"	10.12	12.09	9,009	255	230	184	300
7x7	36' 9"	43' 0"	11.12	13.09	10,161	288	260	208	338
7x8	39' 9"	46' 3"	12.12	14.09	11,314	321	289	231	377
7x9	43' 2"	49' 7"	13.12	15.09	12,466	354	318	255	415
7x10	46' 4"	52' 10"	14.12	16.09	13,618	386	348	279	454
7x11	49' 7"	56' 1"	15.12	17.09	14,770	419	377	302	492
7x12	52' 11"	59' 5"	16.12	18.09	15,922	452	406	326	531
7x13	56' 2"	62' 8"	17.12	19.09	17,074	484	436	350	569
7x14	59' 5"	65' 11"	18.12	20.09	18,226	517	465	373	608
7x15	62' 9"	69' 2"	19.12	21.09	19,378	550	494	397	646
7x16	66' 0"	72' 6"	20.12	22.09	20,530	582	524	420	685
7x17	69' 3"	75' 9"	21.12	23.09	21,682	614	553	444	723

7 meter 45 degree hopper Clearance 34.5" (876 mm) from bottom of hopper (without gate) to base of Leg)  
Based on Standard 16" (406 mm) opening other opening sizes available on request

Model	Eave Height (ft/in)	Overall Height (ft/in)	Eave Height (meters)	Overall Height (meters)	Bushels* (maximum)	Metric Tons* (maximum)			Cubic Meters
						Wheat	Corn	Rice	
<b>7 Meter Commercial Hopper Tanks</b> HOPPER TANKS - Diameter 7 meters (22' 11") 50 degree hopper									
7x4	28' 8"	35' 2"	8.74	10.71	6,957	196	176	142	231
7x5	32' 0"	38' 5"	9.74	11.71	8,114	228	206	165	270
7x6	35' 3"	41' 8"	10.74	12.71	9,271	261	235	189	308
7x7	38' 6"	45' 0"	11.74	13.71	10,429	294	264	213	346
7x8	41' 9"	48' 3"	12.74	14.71	11,580	326	294	236	385
7x9	45' 1"	51' 6"	13.74	15.71	12,744	359	323	260	423
7x10	48' 4"	54' 10"	14.74	16.71	13,901	392	352	284	462
7x11	51' 8"	58' 1"	15.74	17.71	15,058	424	382	307	500
7x12	54' 11"	61' 5"	16.74	18.71	16,216	457	411	331	539
7x13	58' 2"	64' 8"	17.74	19.71	17,373	490	440	355	577
7x14	61' 6"	68' 0"	18.74	20.71	18,530	522	470	378	616
7x15	64' 9"	71' 3"	19.74	21.71	19,688	551	499	402	654
7x16	68' 1"	74' 6"	20.74	22.71	20,845	587	529	426	693
7x17	71' 4"	77' 9"	21.74	23.71	22,003	620	558	449	731

7 meter 50 degree hopper Clearance 34.5" (876 mm) from bottom of hopper (without gate) to base of Leg)  
Based on Standard 16" (406 mm) opening other opening sizes available on request

Behlen commercial hopper tanks are externally stiffened with two stiffener columns per sidewall sheet to the eave and have a one ring access door located in the second ring from the base of the tank.  
Behlen hopper tanks are designed for the storage of grain and similar free-flowing materials weighting up to 50 lbs./ft.<sup>3</sup> (800kg/m<sup>3</sup>). All capacities are based on 28° angle of repose. Bushel and metric tonnage capacity includes 6% compaction.

- Typical Grain Densities:**
- Wheat approximately 50 lbs./ft.<sup>3</sup> (800kg/m<sup>3</sup>)
  - Corn approximately 45 lbs./ft.<sup>3</sup> (720kg/m<sup>3</sup>)
  - Rice approximately 36 lbs./ft.<sup>3</sup> (580kg/m<sup>3</sup>)

Model	Eave Height (ft/in)	Overall Height (ft/in)	Eave Height (meters)	Overall Height (meters)	Bushels* (maximum)	Metric Tons* (maximum)			Cubic Meters
						Wheat	Corn	Rice	
<b>9 Meter Commercial Hopper Tanks - Dia. 9 meters (29' 6") 40 degree hopper</b>									
9x4	28' 6"	36' 10"	8.68	11.23	11,546	327	295	237	385
9x5	31' 10"	40' 2"	9.68	12.23	13,452	381	344	276	449
9x6	35' 1"	43' 5"	10.68	13.23	15,357	435	393	315	513
9x7	38' 4"	46' 9"	11.68	14.23	17,262	490	441	354	576
9x8	41' 8"	50' 0"	12.68	15.23	19,167	544	490	393	640
9x9	45' 0"	53' 3"	13.68	16.23	21,072	598	538	432	703
9x10	48' 3"	56' 7"	14.68	17.23	22,977	652	587	471	767
9x11	51' 6"	59' 10"	15.68	18.23	24,882	706	635	510	831
9x12	54' 9"	63' 1"	16.68	19.23	26,787	760	684	550	894
9x13	58' 1"	66' 5"	17.68	20.23	28,693	814	732	589	958
9x14	61' 4"	69' 8"	18.68	21.23	30,598	868	781	628	1022
9x15	64' 8"	72' 11"	19.68	22.23	32,503	922	830	667	1085
9x16	67' 10"	76' 2"	20.68	23.23	34,408	976	878	706	1149
9x17	71' 2"	79' 6"	21.68	24.23	36,313	1,030	926	745	1212
9 meter 40 degree hopper Clearance 44" (1117 mm) from bottom of hopper (without gate) to base of Leg) Based on Standard 16" (406 mm) opening other opening sizes available on request									
<b>9 Meter Commercial Hopper Tanks - Dia. 9 meters (29' 6") 45 degree hopper</b>									
9x4	30'-9"	39'-2"	9.38	11.93	12,049	339	305	246	400
9x5	34'-0"	42'-5"	10.38	12.93	13,962	393	354	285	464
9x6	37'-4"	45'-9"	11.38	13.93	15,875	447	403	324	528
9x7	40'-7"	49'-0"	12.38	14.93	17,788	501	451	363	592
9x8	43'-10"	52'-4"	13.38	15.93	19,702	555	500	403	655
9x9	47'-2"	55'-7"	14.38	16.93	21,615	609	548	442	718
9x10	50'-5"	58'-10"	15.38	17.93	23,528	663	597	481	782
9x11	53'-8"	62'-2"	16.38	18.93	25,441	717	645	250	846
9x12	56'-11"	65'-5"	17.38	19.93	27,355	771	694	559	909
9x13	60'-3"	68'-8"	18.38	20.93	29,268	825	742	598	973
9x14	63'-7"	71'-11"	19.38	21.93	31,181	879	791	637	1,036
9x15	66'-10"	75'-3"	20.38	22.93	33,094	933	839	676	1,100
9x16	70'-1"	78'-6"	21.38	23.93	35,007	987	888	715	1,164
9x17	73'-5"	81'-10"	22.38	24.93	36,921	1,041	937	754	1,227
9 meter 45 degree hopper Clearance 45" (1117 mm) from bottom of hopper (without gate) to base of Leg) Based on Standard 16" (406 mm) opening other opening sizes available on request									
<b>9 Meter Commercial Hopper Tanks - Dia. 9 meters (29' 6") 50 degree hopper</b>									
9x4	33' 4"	41' 9"	10.17	12.72	12,599	355	319	257	419
9x5	36' 8"	45' 0"	11.17	13.72	14,512	409	368	296	482
9x6	39' 11"	48' 3"	12.17	14.72	16,426	463	416	335	546
9x7	43' 3"	51' 7"	13.17	15.72	18,339	517	465	374	610
9x8	46' 6"	54' 10"	14.17	16.72	20,252	571	514	414	673
9x9	49' 9"	58' 2"	15.17	17.72	22,165	625	562	453	737
9x10	53' 1"	61' 5"	16.17	18.72	24,078	679	611	492	800
9x11	56' 4"	64' 8"	17.17	19.72	25,992	733	622	531	864
9x12	59' 7"	68' 0"	18.17	20.72	27,905	787	708	570	928
9x13	62' 11"	71' 3"	19.17	21.72	29,818	840	756	609	991
9x14	66' 2"	74' 6"	20.17	22.72	31,731	894	805	648	1,055
9x15	69' 5"	77' 10"	21.17	23.72	33,645	948	853	687	1,118
9x16	72' 9"	81' 1"	22.17	24.72	35,558	1002	902	726	1,182
9x17	76' 0"	84' 5"	23.17	25.72	37,471	1,056	950	766	1,246
9 meter 50 degree hopper Clearance 46" (1117 mm) from bottom of hopper (without gate) to base of Leg) Based on Standard 16" (406 mm) opening other opening sizes available on request									

Model	Eave Height (ft/in)	Overall Height (ft/in)	Eave Height (meters)	Overall Height (meters)	Bushels* (maximum)	Metric Tons* (maximum)			Cubic Meters
						Wheat	Corn	Rice	
<b>11 Meter Commercial Hopper Tanks</b>									
<b>HOPPER TANKS - Diameter 11 meters (36' 1") 40 degree hopper</b>									
11x4	30' 9"	40' 7"	9.39	12.38	18,164	524	472	380	619
11x5	34' 1"	43' 11"	10.39	13.38	21,472	605	545	439	714
11x6	37' 4"	47' 2"	11.39	14.38	24,330	686	617	497	809
11x7	40' 8"	50' 6"	12.39	15.38	27,188	766	690	555	904
11x8	43' 11"	53' 9"	13.39	16.38	30,046	847	762	614	999
11x9	47' 2"	57' 0"	14.39	17.38	32,904	964	835	672	1094
11x10	50' 6"	60' 4"	15.39	18.38	35,762	1,008	907	731	1189
11x11	53' 9"	63' 7"	16.39	19.38	38,620	1,088	980	789	1284
11x12	57' 0"	66' 10"	17.39	20.38	41,478	1,169	1,052	848	1379
11x13	60' 4"	70' 2"	18.39	21.38	44,336	1,250	1,125	906	1474
11x14	63' 7"	73' 5"	19.39	22.38	47,194	1,330	1,197	964	1569
11x15	66' 11"	76' 8"	20.39	23.38	50,052	1,411	1,270	1,023	1664
11x16	70' 2"	80' 0"	21.39	24.38	52,910	1,492	1,342	1,081	1759
11x17	73' 5"	83' 3"	22.39	25.38	55,768	1,572	1,415	1,140	1854

11 meter 40 degree hopper Clearance 42" (1066 mm) from bottom of hopper (without gate) to base of Leg)  
Based on Standard 16" (406 mm) opening other opening sizes available on request

Model	Eave Height (ft/in)	Overall Height (ft/in)	Eave Height (meters)	Overall Height (meters)	Bushels* (maximum)	Metric Tons* (maximum)			Cubic Meters
						Wheat	Corn	Rice	
<b>11 Meter Commercial Hopper Tanks</b>									
<b>HOPPER TANKS - Diameter 11 meters (36' 1") 45 degree hopper</b>									
11x4	33' 10"	43' 7"	10.30	13.30	19,457	548	493	397	647
11x5	37' 1"	46' 11"	11.30	14.30	22,315	629	566	456	742
11x6	40' 4"	50' 2"	12.30	15.30	25,173	709	639	514	837
11x7	43' 8"	53' 6"	13.30	16.30	28,031	790	711	573	932
11x8	46' 11"	56' 9"	14.30	17.30	30,889	871	784	631	1027
11x9	50' 2"	60' 0"	15.30	18.30	33,747	951	856	689	1122
11x10	53' 6"	63' 4"	16.30	19.30	36,605	1,032	929	748	1217
11x11	56' 9"	66' 7"	17.30	20.30	39,463	1,112	1001	806	1312
11x12	60' 0"	69' 11"	18.30	21.30	42,321	1,193	1,074	865	1407
11x13	63' 4"	73' 2"	19.30	22.30	45,180	1,274	1,146	923	1502
11x14	66' 7"	76' 5"	20.30	23.30	48,038	1,354	1,219	982	1597
11x15	69' 11"	79' 9"	21.30	24.30	50,896	1,435	1,291	1,040	1692
11x16	73' 2"	83' 0"	22.30	25.30	53,754	1,515	1,364	1,099	1787
11x17	76' 5"	86' 3"	23.30	26.30	56,612	1,596	1,436	1,157	1882

11 meter 45 degree hopper Clearance 42" (1066 mm) from bottom of hopper (without gate) to base of Leg)  
Based on Standard 16" (406 mm) opening other opening sizes available on request

Behlen commercial hopper tanks are externally stiffened with two stiffener columns per sidewall sheet to the eave and have a one ring access door located in the second ring from the base of the tank.  
Behlen hopper tanks are designed for the storage of grain and similar free-flowing materials weighting up to 50 lbs./ft.<sup>3</sup> (800kg/m<sup>3</sup>). All capacities are based on 28° angle of repose. Bushel and metric tonnage capacity includes 6% compaction.

- Typical Grain Densities:**
- Wheat approximately 50 lbs./ft.<sup>3</sup> (800kg/m<sup>3</sup>)
  - Corn approximately 45 lbs./ft.<sup>3</sup> (720kg/m<sup>3</sup>)
  - Rice approximately 36 lbs./ft.<sup>3</sup> (580kg/m<sup>3</sup>)

# Complete grain handling, storage and drying packages.

Behlen manufactures and ships, world wide, a complete line of silos, grain dryers, and building systems. All of these products are designed to meet specific, individual requirements.

The Behlen commitment to customer satisfaction includes a manufacturing process that utilizes optimum efficiency standards to meet customer demands for quality products. Each Behlen product is designed to give the user every cost advantage possible from fabrication through construction.

**Behlen Grain Storage Silos** range in size from 2,630 to 1,500,000 bushels. These silos feature a unique trapezoidal wall panel design. Commercial silos, with inside stiffeners, have the added feature of exclusive built-in wind bands. The wind bands provide excellent wind resistance and reduce installation cost. Wall stiffeners are standard in all commercial storage silos and can be installed on the inside or the outside.



**Behlen Grain Storage Buildings** can be designed to meet virtually any grain storage requirement. Behlen engineers can turn all-steel, rigid frame buildings into highly efficient, low cost grain storage structures, allowing you to store grain up to 20' against building sidewalls. Behlen buildings can provide the storage alternative you have been looking for to solve your large storage needs.



**Behlen's Curvet** building has proven itself as an excellent building system giving long life and outstanding performance. The arched sections provide excellent strength and allow for an economical solution to grain or equipment storage.



AD-17265I 2.17



**Behlen Mfg. Co.**

P.O. Box 569 • Columbus, NE 68602-0569

**PH 402.564.3111 • FAX 402.563.7405**

[www.behlenmfg.com](http://www.behlenmfg.com) • EMAIL [behlen@behlenmfg.com](mailto:behlen@behlenmfg.com)